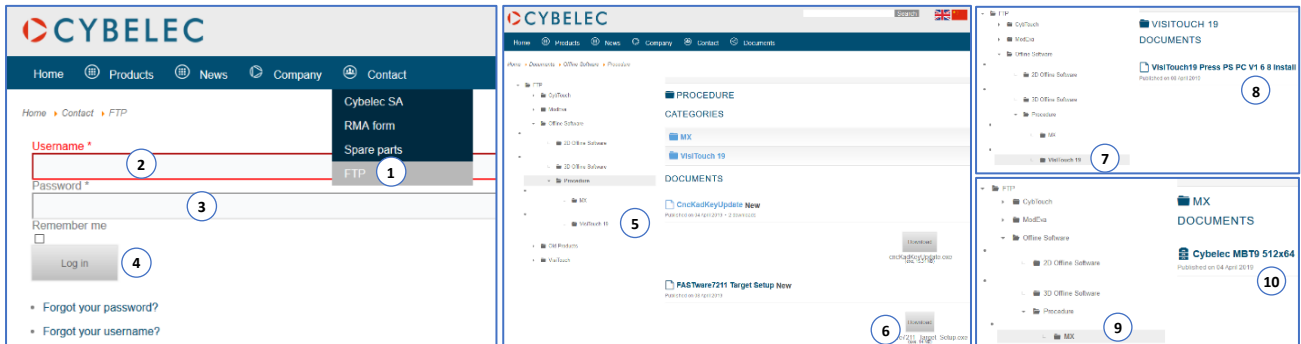


SOFTWARE DOWNLOAD

Download the different software via our secure FTP server. Go to <https://www.cybelec.ch/>

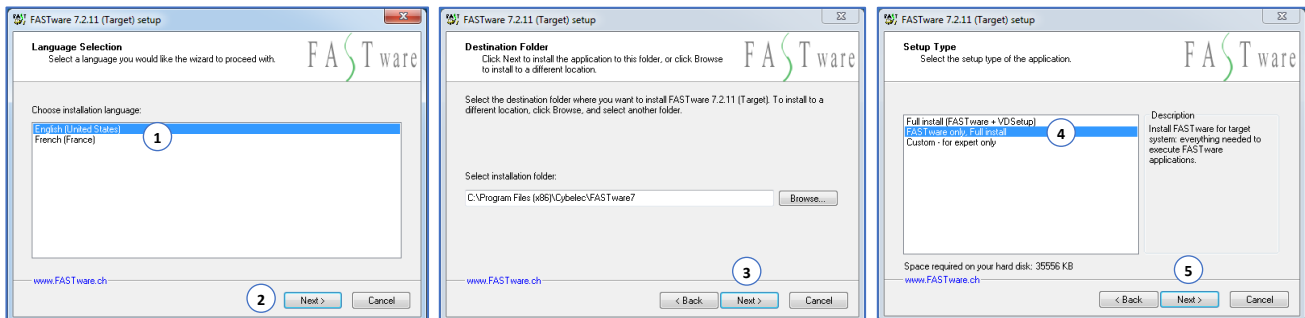


- Click on **Contact** -> **FTP (1)**, Fill your **Username (2)**, Fill your **Password (3)** and Click on **Log in (4)** button.
- Click on **Offline Software** -> **Procedure (5)**, Click on the **Download link (6)** button to download the latest version of **FASTwareXXXX_Target Setup.exe** and save it on your PC.
- Click on **Offline Software** -> **Procedure** -> **VisiTouch 19 (7)** Click on the **Download link (8)** button to download the latest version of **VisiTouch 19 Press PS PC** and save it on your PC.
- Click on **Offline Software** -> **Procedure** -> **MX (9)** Click on the **Download link (10)** button to download the latest version of **Cybelec MBT9 XXXx64** and save it on your PC.

SOFTWARE INSTALLATION AND REGISTRATION – VISITOUCH OFFLINE

FASTWARE

The FASTware license utility **must be installed and the license activated before installing VisiTouch Offline**. Start the application **FASTwareXXXX_Target Setup.exe**. Make sure you run it (right-click) **AS AN ADMINISTRATOR**.

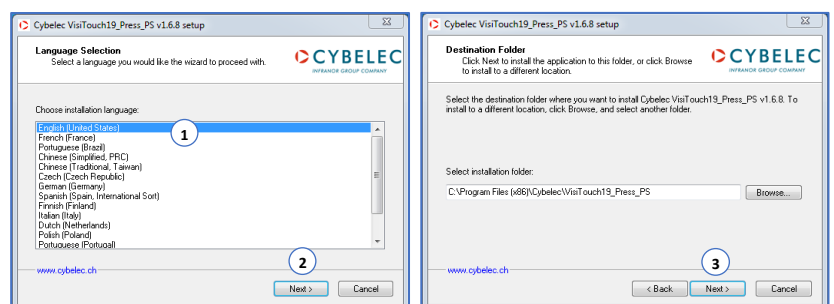


Select the **Language (1)**, Click on **Next > (2 and 3)**, Select **FASTware only, Full install (4)**, Click on **Next > (5)** and finish the installation. A pop-up will open, **close it and go to next page, chapter LICENSE REGISTRATION**.

VISITOUCH OFFLINE

Start the application **VisiTouch_19_Press_PS_PC.exe**. Make sure you run it (right-click) **as an administrator**.

Select the **Language (1)**, Click on **Next > (2 and 3)** and finish the installation.

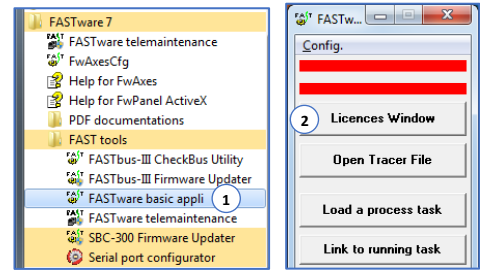


LICENSE REGISTRATION

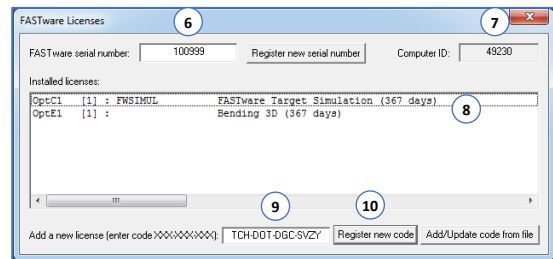
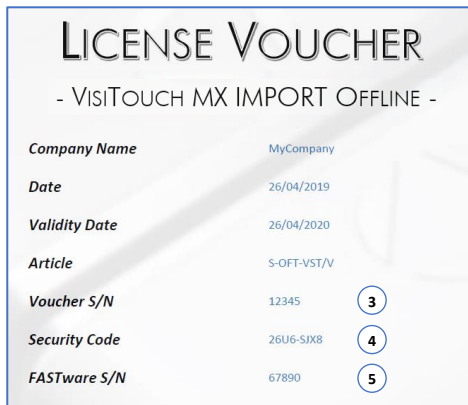
Start the program **FASTware basic appli (1)** located in:
Windows Start button -> FASTware 7 -> FAST Tools -> FASTware basic appli

Make sure you run it with administrator privileges.

Click on **Licenses Window (2)** to open FW licenses management.



VISITOUCH OFFLINE – LIFETIME LICENSE



Send us by email at sales.adm@cybelec.ch these information: **Voucher S/N (3)**, **Security Code (4)** and **Computer ID (8)**.

You will receive by mail under 2-3 working days your Lifetime license code.

Fill the field **FASTware serial number (6)** and **Add a new license (9)** with the information provided.

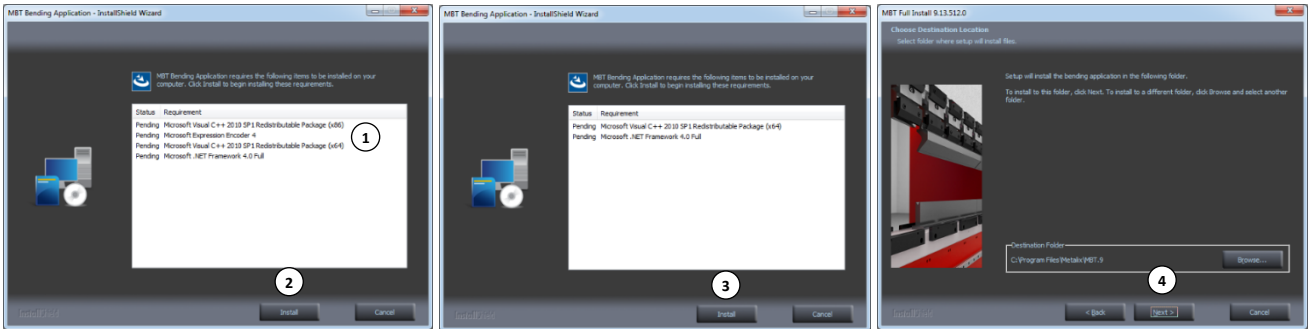
Then, click on **Register new code (10)** button. A **pop-up (11)** will inform you that a new serial has been registered.

You can now use VisiTouch Offline software.

SOFTWARE INSTALLATION AND REGISTRATION – MX IMP

CYBELEC MBT9 (MX)

Start the application **Setup.exe** located in the archive. Make sure you run it (right-click) **as an administrator**.

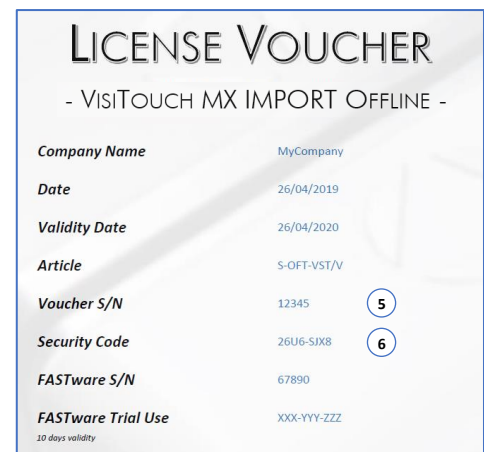
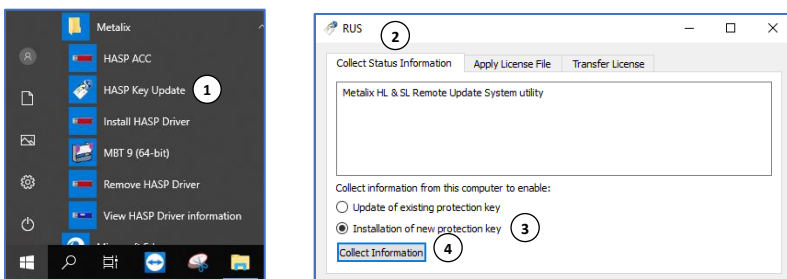


Some **Microsoft software (1)** need to be installed, click on **Install (2)**. You might be prompted to restart your computer. After that, relaunch **Setup.exe** then Click on **Install (3)**, Click on **Next > (4)** and finish the installation.

MX IMP – LICENSE REGISTRATION

➤ Collect Status Information

Start the program **HASP Key Update (1)** located in:
Windows Start button -> Metalix



Select **Collect Status Information (2)**, Select **Installation of new protection key (3)**, Click on **Collect Information (4)** and save the ***.c2v** file on your computer.

Send us by email at sales.adm@cybelec.ch these information: **Voucher S/N (5)**, **Security Code (6)** and your ***.c2v** file.

You will receive by mail under 2-3 working days a ***.v2c** file.

➤ Apply License

Start the program **HASP Key Update (1)** located in:
Windows Start button -> Metalix

Select **Apply License File (7)**, Select the location path of your ***.v2c** file **(8)**, Click on **Apply Update (9)**.

You can now use VisiTouch MX IMP Offline software.

